

# HERMLE

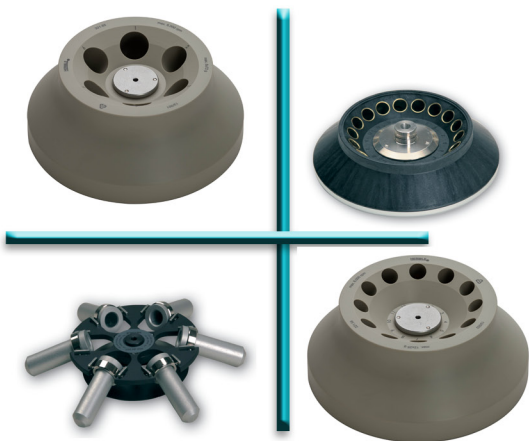
**Benchmark**

## Z206A

**Compact Centrifuge**



- Accepts tubes up to 50ml
- Compact, 11 x 14.5 inch footprint
- 4 available rotor options
- Suitable for blood, urine and cell separations



### Z206 A Summary

Speed up to 6,000 rpm  
G-Force up to 4,427 x g

Angle Rotor Capacity  
6 x 50 ml  
12 x 15 ml  
18 x 1.5/2.0 ml

### Z206 A Features

#### Microprocessor Control

- Permanent indication of both set and actual values
- Over-speed protection
- Increments of 10 rpm/50 rcf
- Imbalance detection
- Adjustable Accel/Decel
- Audible end of run alarm
- Preselection of rotor code for proper g-force conversion

- Maintenance free induction drive
- Quiet operation, less than 60 DB
- Splash proof display
- Compact, only 11 inches wide
- Electrical Safety lid-lock

### Z206 A Specifications

Speed Range: 200 to 6,000 rpm  
Max. RCF: 4,427 x g  
Max Capacity: 6 x 50 ml  
Timer: up to 99 hr, 59 min.  
Dimensions: 11 x 14.5 x 10.2 in.  
(W x D x H) 28 x 37 x 26 cm.  
Weight: 33 lbs (15 kg)  
Electrical: 120 or 230V, 50/60 Hz  
Power Draw: 100W

The Z206-A Compact Centrifuge is suitable for a variety of applications inside both the clinical and research setting. Three angle rotor options are available permitting use with all common tube sizes from 0.2ml to 50ml. A unique 6 x 5ml swing out rotor is also available for clinical applications requiring horizontal separation within 5ml blood collection tubes.

The advanced microprocessor controls feature an ergonomic turn knob that controls all settings (time, speed, accel/decel levels, etc.). The speed can be adjusted from 200 rpm up to a maximum speed of 6,000 rpm (corresponding to 4,427 x g) in the popular 50ml and 15ml rotors.

The centrifuge lid features and automatic lid-lock that prevents it from being opened while the rotor is still in motion. In addition, a unique imbalance detection system is designed to automatically power down the motor in the event of improper loading of the rotor or any tube breakage.

Compact, quiet, and versatile are just a few of the features found on the Z206-A centrifuge. Add to this, the proven safety features, and the result is the ideal centrifuge for a variety of clinical and molecular biology applications.

Z206-A\*

Z206A Compact Centrifuge (without rotor), 120V

\*115V with US Plug. For 230V (EU Plug), please order -E.



#### Item: Z206-0650

6 x 50ml Angle Rotor (40°)

Max Speed: 6,000 rpm / 4,427 x g

Accel: 27 sec. / Decel: 43 sec.

#### Inserts/Adapters

Z206-50-A15: 15ml (conical or round)

Z206-50-A57: 5-7ml (12-13mm)

Z206-50-A5C: Cushion for 5ml tube



#### Item: Z206-1215

12 x 15ml Angle Rotor (32°)

Max Speed: 6,000 rpm / 4,427 x g

Accel: 33 sec. / Decel: 51 sec.

#### Inserts/Adapters

C3100-ADP: 5-7ml (12-13mm)



#### Item: Z206-1820

18 x 1.5/2.0ml Angle Rotor (45°)

Max Speed: 6,000 rpm / 2,938 x g

Accel: 11 sec. / Decel: 10 sec.



#### Item: Z206-0605

6 x 5ml Swing Out Rotor (90°)

Max Speed: 4,000 rpm / 1,896 x g

Accel: 8 sec. / Decel: 7 sec.